



**LBCME - 16 - S**

**Linear Bearing Closed Metric**

**LBCME** - European ISO Super Metric Bearing

**Nominal Diameter**

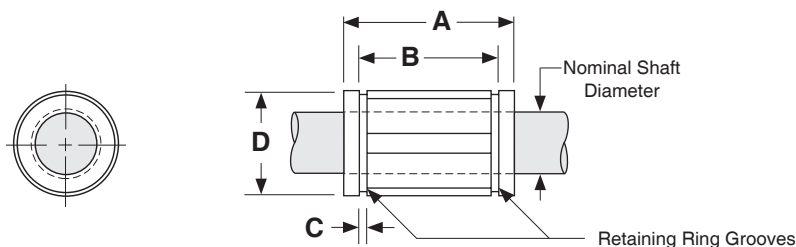
- 16** - 16 mm diameter      **30** - 30 mm diameter
- 20** - 20 mm diameter      **40** - 40 mm diameter
- 25** - 25 mm diameter      **50** - 50 mm diameter

**Bearing Options**

- No seals      **S** - Seals at both ends

## Dimensions & Specifications: **LBCME** Linear Bearing Closed Metric (European Style)

Model Number		Nominal Shaft Diameter (mm)	Dynamic Load Capacity N (Kgf)	Housing Bore D (mm) <sup>(2)</sup>	Dimensions (mm)			No. of Ball Tracks	Bearing Weight (kg)
Without Seals	With Seals				A	B	C		
LBCME-16	LBCME-16-S	16	1176 (119,9)	26	36	24,6	1,30	5	0,026
LBCME-20	LBCME-20-S	20	2352 (239,8)	32	45	31,2	1,60	6	0,060
LBCME-25	LBCME-25-S	25	4508 (459,6)	40	58	43,7	1,85	6	0,120
LBCME-30	LBCME-30-S	30	5586 (569,6)	47	68	51,7	1,85	6	0,184
LBCME-40	LBCME-40-S	40	9310 (949,3)	62	80	60,3	2,15	6	0,342
LBCME-50	LBCME-50-S	50	13720 (1399,0)	75	100	77,3	2,65	6	0,586



(1) Rating based upon 50km of travel with the load forces being applied downward on the linear bearing, while in a horizontal application, and based upon 1060 steel shafting (Rockwell 60C).

(2) This specification is based upon the bearing being on the shaft.

<b>Operating Temperature</b>	-17.8° C to +85° C														
<b>Maximum Speed</b>	2,74 meters/second														
<b>Matching Shaft</b>	Metric Diameters (SM series), hardened & ground shafting														
<b>Housing Tolerances</b>	<table border="1"> <thead> <tr> <th>Nominal Shaft Diameter (mm)</th> <th>Recommended Housing Bore D (mm)</th> </tr> </thead> <tbody> <tr> <td>16</td> <td>26,10 / 26,03</td> </tr> <tr> <td>20</td> <td>32,10 / 32,05</td> </tr> <tr> <td>25</td> <td>40,10 / 40,05</td> </tr> <tr> <td>30</td> <td>47,15 / 47,05</td> </tr> <tr> <td>40</td> <td>62,15 / 62,05</td> </tr> <tr> <td>50</td> <td>75,20 / 75,02</td> </tr> </tbody> </table>	Nominal Shaft Diameter (mm)	Recommended Housing Bore D (mm)	16	26,10 / 26,03	20	32,10 / 32,05	25	40,10 / 40,05	30	47,15 / 47,05	40	62,15 / 62,05	50	75,20 / 75,02
Nominal Shaft Diameter (mm)	Recommended Housing Bore D (mm)														
16	26,10 / 26,03														
20	32,10 / 32,05														
25	40,10 / 40,05														
30	47,15 / 47,05														
40	62,15 / 62,05														
50	75,20 / 75,02														